

Tamper-Evident Carry Out & Pizza Box Bags



Features & Benefits

- Adhesive strip to permanently seal the bags
- Unique perforated design for easy access when opening
- Strong handles for easy transporting and delivery
- Strategically ventilated to remove excess air when sealing
- Wide opening to fit various containers
- User-friendly design for fast service operations
- Flat packed for limited storage space areas
- Customized based on your preference
- Patent pending design

Applications

- Pizzerias
- Restaurants
- Catering facilities
- Hospitality facilities
- Supermarkets

TECO® Bags

Product Code	Film Type	Color	Width (inch)	Length (inch)	Gusset (inch)	Flap (inch)	Bags / Case	Cases / Pallet	Cases / Layer	Case Cube	Inner UPC # 7-62935~	Outer UPC # 107-62935~
TECO-1	HDPE	White	20	17.5	11	4.5	250	120	8	0.34	07163-9	07163-6

TECO® Pizza Box Bags

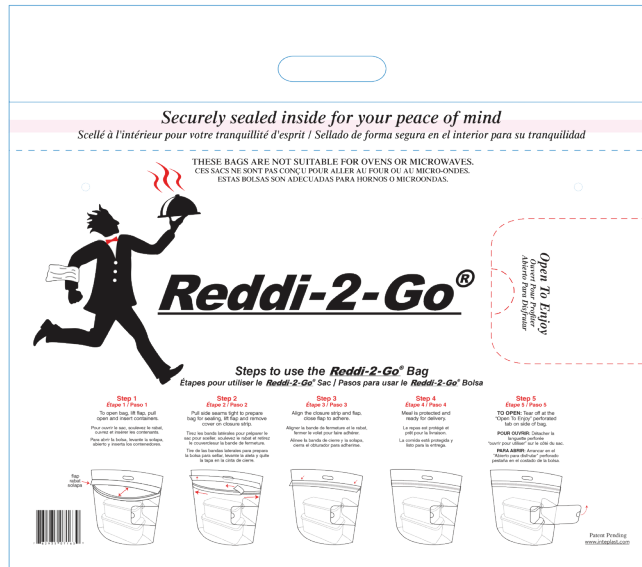
Product Code	Capacity	Film Type	Color	Width (inch)	Length (inch)	Flap (inch)	Cases / Pack	Cases / Pallet	Cases / Layer	Case Cube	Outer UPC # 107-62935~
TECO-PIZZA1	1 or 2 Large Boxes	HDPE	White	22	24.5	3	250	120	8	0.34	077089

TECO® Bags

Strong handle for easy carrying.

Trusted brand name for quality.

UPC barcode printed for scanning.



Seal with added flap designed to keep foods secure and fresh.

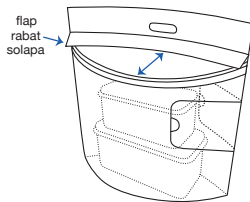
Unique perforated opening for easy dispensing.

Instructions in English, Spanish, and French.

Easy Packing Instructions

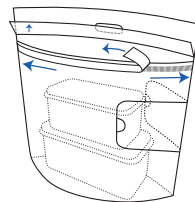
Step 1 Étape 1 / Paso 1

To open bag, lift flap, pull open and insert containers.
Pour ouvrir le sac, soulevez le rabat, ouvrez et insérez les contenants.
Para abrir la bolsa, levante la solapa, abierto e inserta los contenedores.



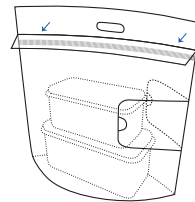
Step 2 Étape 2 / Paso 2

Pull side seams tight to prepare bag for sealing, lift flap and remove cover on closure strip.
Tirez les bandes latérales pour préparer le sac pour sceller, soulevez le rabat et retirez le couvercle sur la bande de fermeture.
Tire de las bandas laterales para preparar la bolsa para sellar, levante la aleta y quite la tapa en la cinta de cierre.



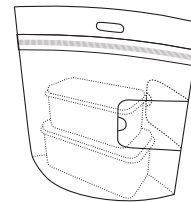
Step 3 Étape 3 / Paso 3

Align the closure strip and flap, close flap to adhere.
Aligner la bande de fermeture et le rabat, fermer le volet pour faire adhérer.
Alinee la banda de cierre y la solapa, cierra el obturador para adherirse.



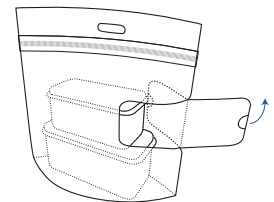
Step 4 Étape 4 / Paso 4

Meal is protected and ready for delivery.
Le repas est protégé et prêt pour la livraison.
La comida está protegida y listo para la entrega.

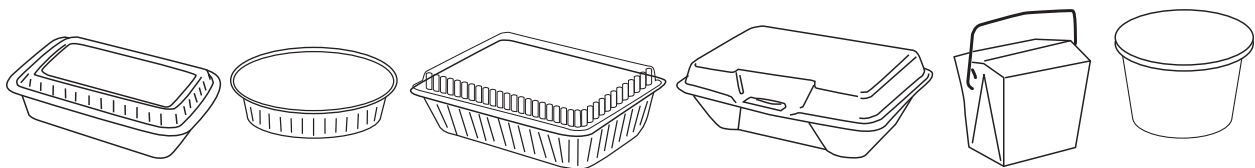


Step 5 Étape 5 / Paso 5

TO OPEN: Tear off at the "Open To Enjoy" perforated tab on side of bag.
POUR OUVRIR: Détacher la languette perforée "ouvrir pour utiliser" sur le côté du sac.
PARA ABRIR: Arrancar en el "Abierto para disfrutar" perforado pestaña en el costado de la bolsa.



Suitable for Multiple Containers



For patent information, please visit www.inteplast.com/patents

TEL: 1-800-896-3222
info@ibsbags.com
www.inteplast.com

OFFICE: 9 Peach Tree Hill Rd., Livingston, NJ 07039
PLANT: 101 Inteplast Blvd., Lolita, TX 77971

TECO Bags July 2020